



EM Series Gesture Model  
Windows® Embedded Compact 7  
Panel Computer

# **EMG7**

12.1" : EMG7-312A8-00DC-x11-01  
Setup Tool Manual

Seedsware Corporation  
<http://www.seedsware.co.jp/global>

# Table of Contents

1. Summary .....	3
2. Starting/Ending of Setup Tool.....	3
2-1 Starting the Setup Tool .....	3
2-2 Ending the Setup Tool.....	3
3. How to Configure the Setting .....	4
3-1 Backlight Setting .....	4
3-1-1 Backlight Automatic Shutoff Setting.....	4
3-1-2 Backlight Brightness Setting .....	4
3-2 Touch Screen Setting.....	5
3-2-1 Sensor Sensitivity Calibration .....	5
3-2-2 Coordination Calibration .....	6
3-2-3 Touch Sound Setting.....	7
3-2-4 Cursor Setting .....	7
3-3 Date/Time Setting .....	8
3-3-1 Date Setting .....	8
3-3-2 Time Setting .....	9
3-4 Display Setting.....	10
3-4-1 Display Angle of Display .....	10
3-5 Network Setting .....	11
3-5-1 DHCP Setting.....	11
3-5-2 IP Address Setting .....	12
3-6 Registry Store .....	13
3-6-1 Registry Store .....	13
3-7 Startup Screen Setting.....	14
3-7-1 Selecting Bitmap for Startup screen .....	14
4. Starting and Setting of Termination Resistor Setup Tool.....	15
4-1 Termination Resistor Tool .....	15
4-2 Setting of Termination Resistor Tool. ....	15

# 1. Summary

This manual explains how to use the EMG7 setup tool.

“Backlight”, “Touch screen”, “Date/Time”, and “Network” configuration can be set with the EMG7 setup tool.

## 2. Starting/Ending of Setup Tool

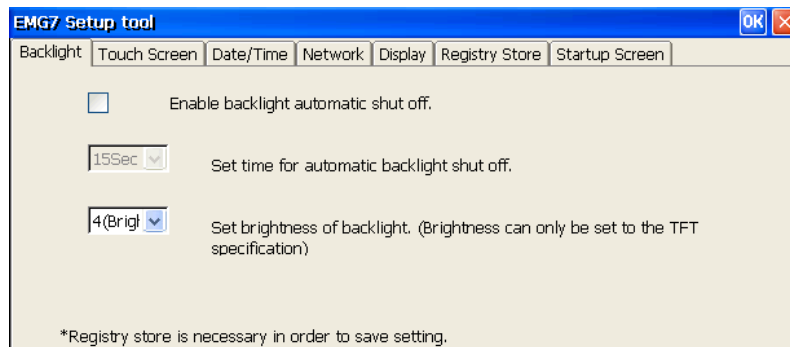
### 2-1 Starting the Setup Tool

From the start menu, click *Start > Program > EMG7 Setup Tool*.

It can also be opened from the *EMG7 Setup Tool* icon on the desktop.

Window below will appear when opened.

Each setting can be configured by clicking the corresponding tab.



### 2-2 Ending the Setup Tool

EMG7 Setup tool can be terminated by clicking *OK* or the *x* button on the title bar.

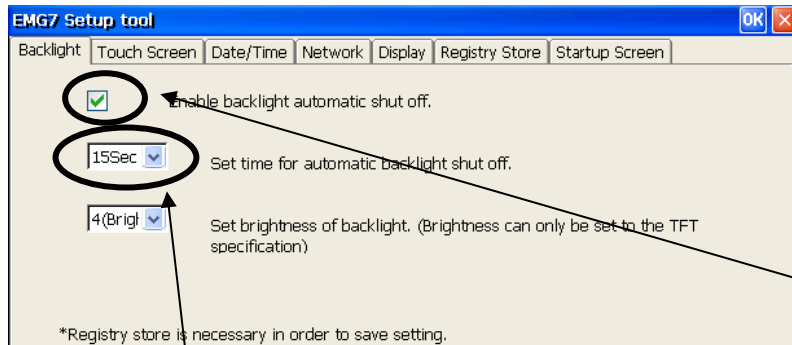
### 3. How to Configure the Setting

#### 3-1 Backlight Setting

Click *Backlight* tab and backlight setting screen will appear.  
Backlight and brightness of the backlight can be configured.

##### 3-1-1 Backlight Automatic Shutoff Setting

Backlight can be set to shut off automatically after a certain time has elapsed from the last touch screen input.  
After backlight automatically shuts off, it will turn back on at touch screen input.



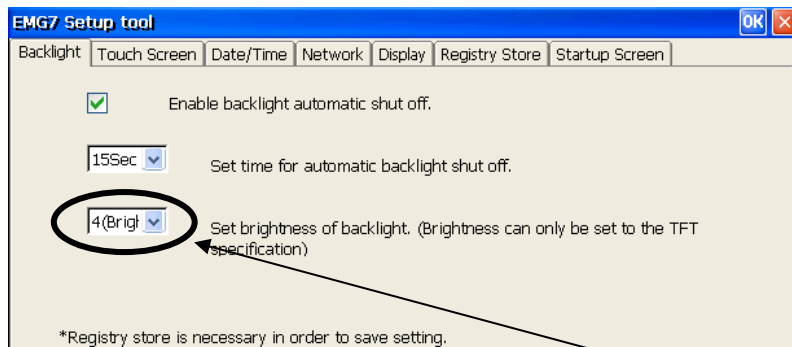
Place a check to activate backlight automatic shut off.

Choose time for automatic shut off.

Note) Registry must be stored to save setting. Touch input will not be active for 0.5 seconds after the first touch input after backlight goes off.

##### 3-1-2 Backlight Brightness Setting

Backlight brightness can be adjusted in four levels.



Note) Registry must be stored to save setting.

Choose brightness.

### 3-2 Touch Screen Setting

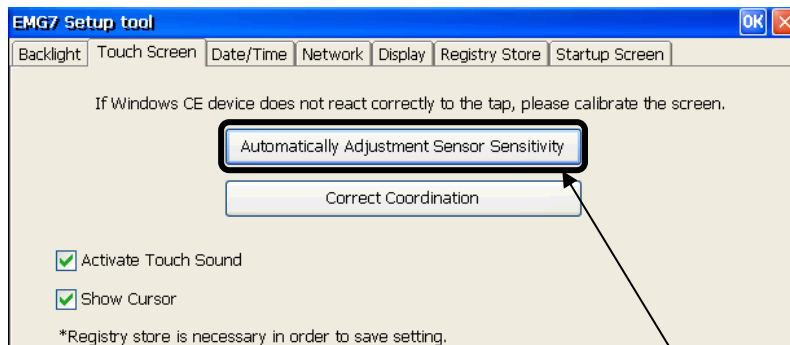
Click *Touch screen* tab and touch screen setting screen will appear.

Touch screen calibration, show/hide of cursor, sound setting can be configured.

EMG7 calibration includes “Sensor Sensitivity Calibration” that optimizes touch screen operation by resetting the influence of surrounding noise and metal of the installation environment, and “Coordination Calibration” that match the touched location with the coordination.

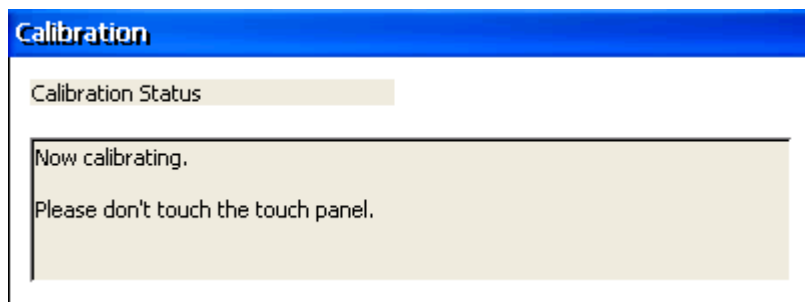
#### 3-2-1 Sensor Sensitivity Calibration

Click *Automatic Adjustment of Sensor Sensitivity* to calibrate sensor sensitivity.

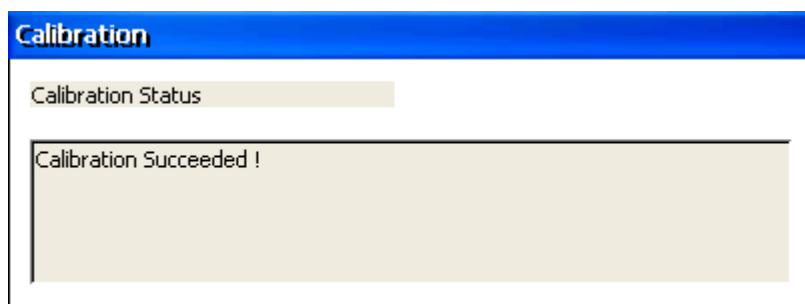


Click to execute calibration.

Below window will appear when executed.



Do not touch the touch screen or the product until calibration ends completely. Calibration will end automatically.



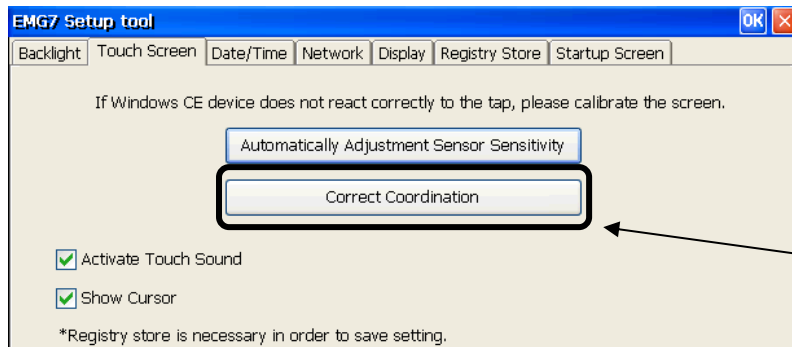
After calibrating, reboot and make sure the touch screen operates correctly. If it does not operate correctly, try calibrating again.

Note) Registry does not have to be stored to save calibration data of sensor sensitivity.

### 3-2-2 Coordination Calibration

Click *Correct Coordination* to calibrate the coordination.

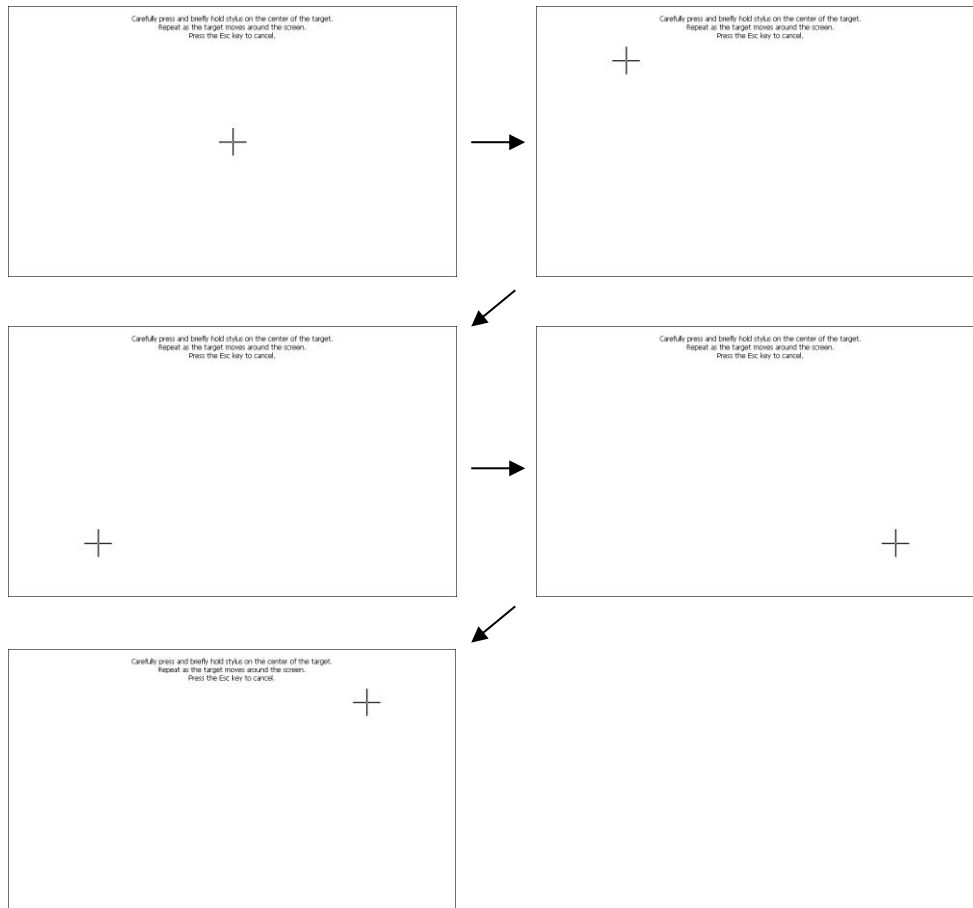
Conduct calibration manually by finger.



Click to execute coordinate calibration.

A cross mark <+> will appear on the screen.

Touch the center of the cross in the order it appears. (Five locations in total)



After all five locations, “center”, “upper left”, “lower left”, “lower right”, and “upper right”, have been touched, below screen will appear. Touch the screen to end calibration. To cancel, connect a keyboard and press ESC.

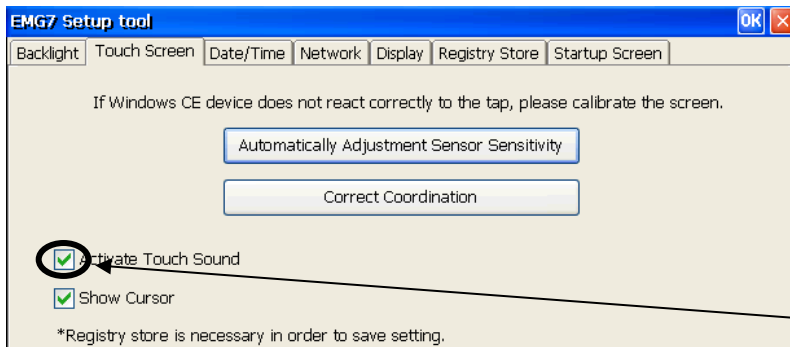


After calibrating, reboot and make sure the touch screen operates correctly. If it does not operate correctly, try calibrating again.

Note) Registry must be stored to save setting.

### 3-2-3 Touch Sound Setting

Touch sound can be configured to activate or deactivate.

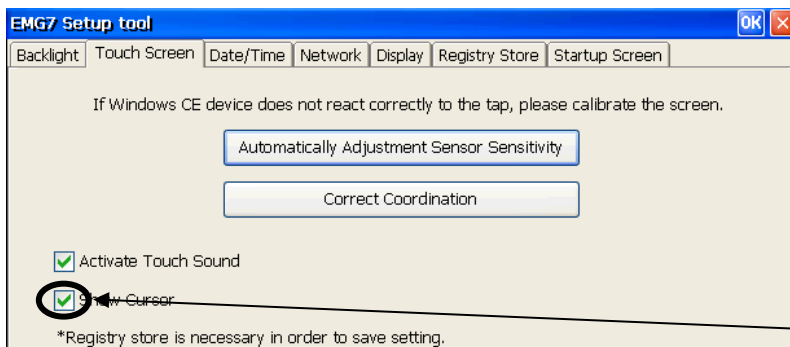


Place a check to activate touch sound.

Note) Store registry and reboot the computer to enable the new setting.

### 3-2-4 Cursor Setting

Cursor can be shown or hidden.



Place a check to show cursor.

Note) Store registry and reboot the computer to enable new setting.

### 3-3 Date/Time Setting

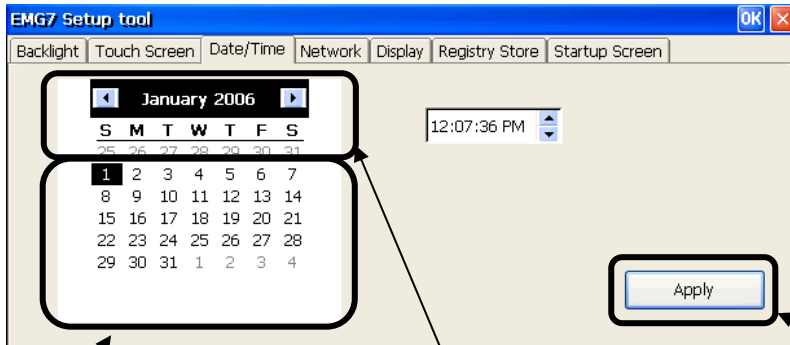
Click *Date/Time* tab and the time setting screen will appear.

Date and time setting can be configured.

#### 3-3-1 Date Setting

Year, month, and day can be set.

Click *Apply* to reflect setting.



Select date.

Set year and month with spin button.

Click to apply the setting.



Year can be changed directly by clicking over the year and changing the value by spin button, or keyboard.



Month can be changed directly by clicking over the month and choosing from box.

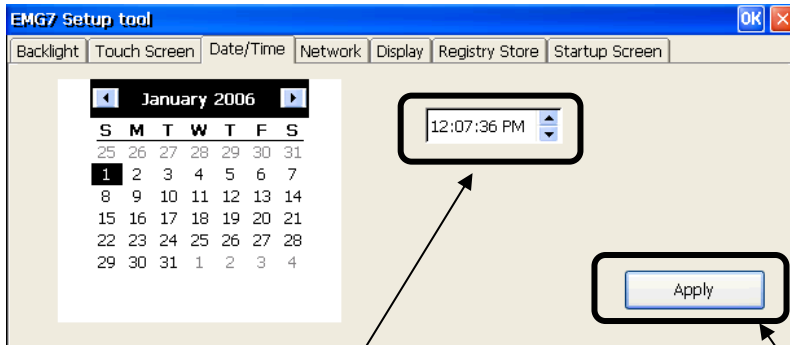
Note) Registry does not have to be stored to save date data.



### 3-3-2 Time Setting

Hour, minute, and second can be configured.

Click *Apply* to reflect setting.



Choose the value (hour, minute, seconds) by spin button or keyboard.

Click to apply setting.

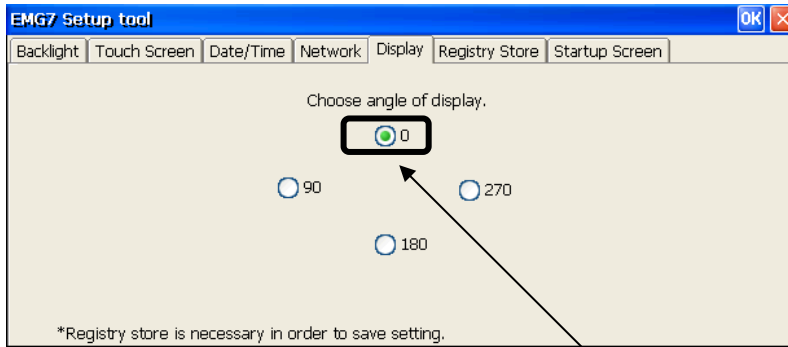
Note) Registry does not have to be stored to save time data.

### 3-4 Display Setting

Click *Display* tab and display rotation angle setting screen will appear.  
Angle of display can be changed and set.

#### 3-4-1 Display Angle of Display

Click each angle to reflect setting.



Choose by radio button.

Note) Registry must be stored to save setting.

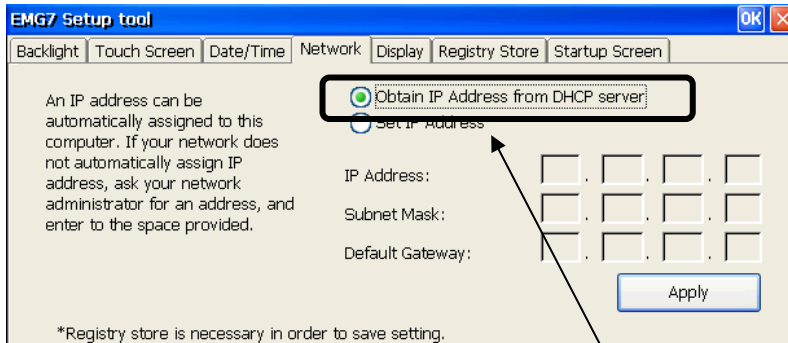
### 3-5 Network Setting

Click *Network* tab and network setting screen will appear.  
Network of IP can be set.

#### 3-5-1 DHCP Setting

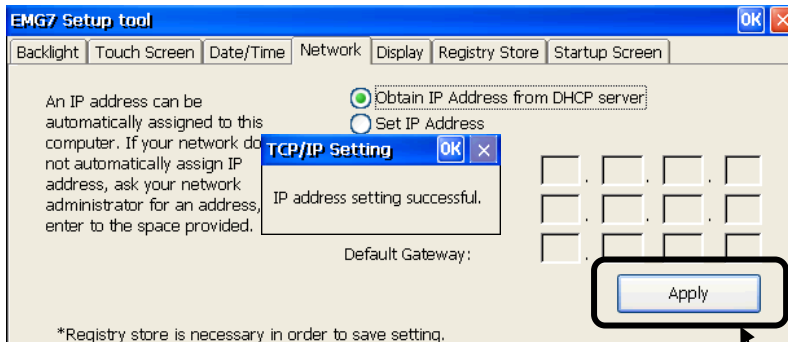
Click *Obtain IP Address from DHCP server*.

IP address can be obtained for the DHCP server.



Choose by radio button.

Click *Apply* to reflect the setting of obtaining from DHCP server.



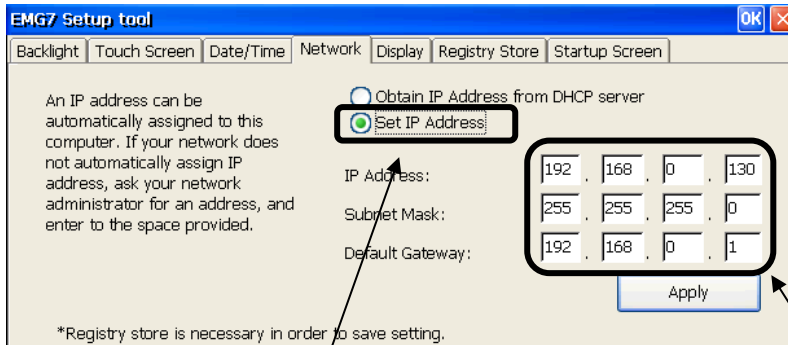
Click to apply setting.

Note) Registry must be stored to save setting.

### 3-5-2 IP Address Setting

Choose and click *IP Address Setting*.

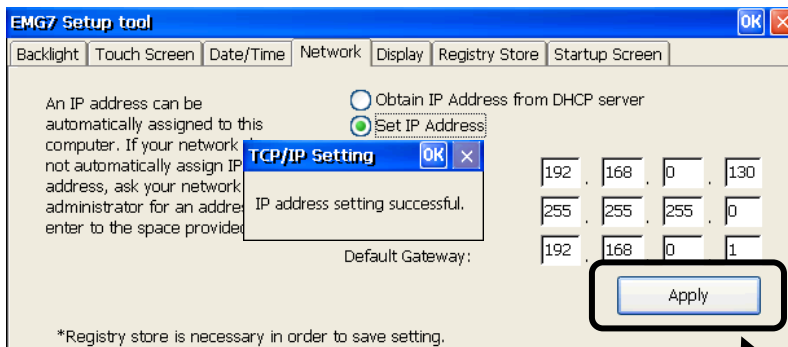
IP can be set manually.



Choose by radio button.

Input by keyboard after clicking.

Click *Apply* to enable IP.



Click to apply setting.

Note) Registry must be stored to save setting.

### 3-6 Registry Store

Click *Registry Store* tab and registry store screen will appear.

Registry can be stored in this process.

Registry will be stored by setting tool with HIVE base registry.

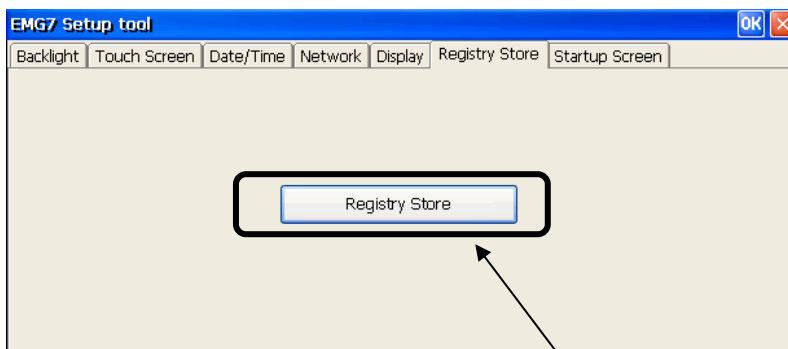
Registry must be stored in order to enable the change made in registry at boot up.

#### 3-6-1 Registry Store

Click *Registry Store* to process the registry store.

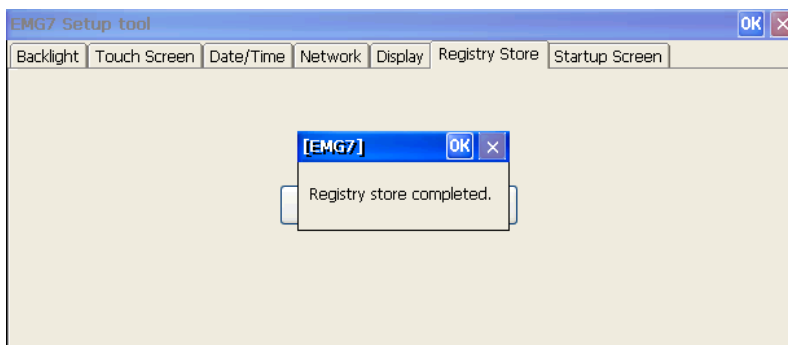
Memory partitioning setting (<control panel> - <system> - <memory> setting value) will also be stored when registry store is processed.

The stored value will be valid from the next boot up.



Click to process registry store.

Below box will appear after successfully storing registry.

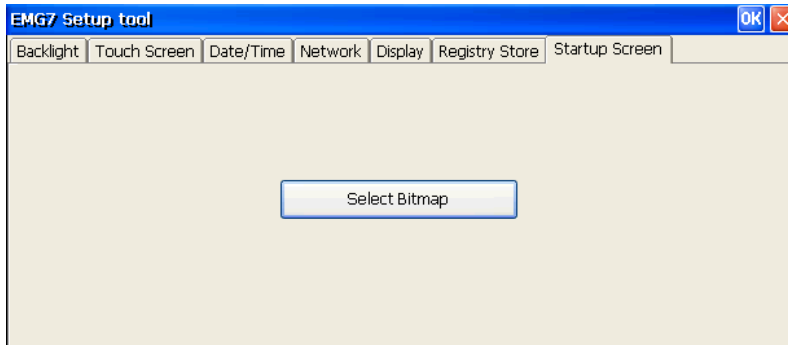


### 3-7 Startup Screen Setting

Click *Startup Screen*. Start screen setting screen will appear.  
Screen displayed before Windows boot up can be configured.

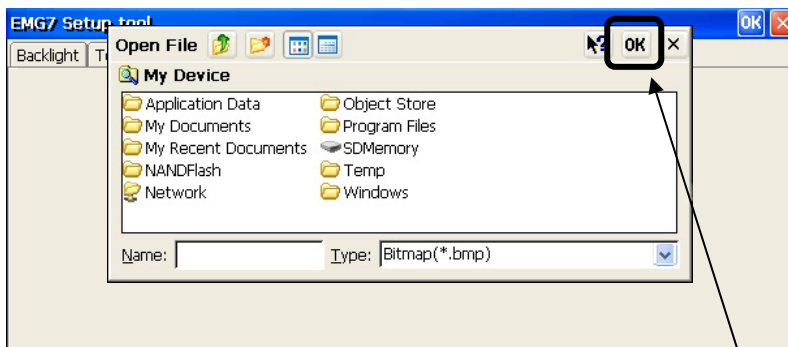
#### 3-7-1 Selecting Bitmap for Startup screen

Click *Select Bitmap* to select the bitmap to be used for startup screen.



Window for choosing bitmap will appear.

Select the bitmap to be used at start screen and click *OK* at the upper right corner of the window.



Click after choosing the bitmap.

After the window for bitmap selecting disappears, configuration is complete.  
Reboot and make sure the setting is valid at start screen.

- Image file that can be used.  
Format: 24bit bitmap file  
Image size: 800 x 600 (W x H)

## 4. Starting and Setting of Termination Resistor Setup Tool

### 4-1 Termination Resistor Tool

Click *Start-Program-RS485 Resistor Setup Tool* from start menu or click on *RS485 Resistor Setup Tool* icon on the desktop to boot and below window will appear.

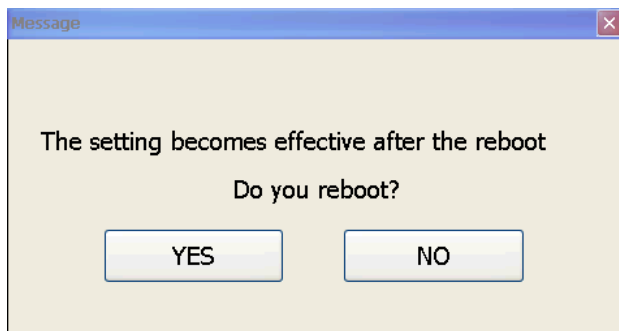


### 4-2 Setting of Termination Resistor Tool.

Select setting by radio button and click *OK*.

Terminal Resistor setting will be stored.

After clicking *OK*, below message will appear.



New setting will become valid after rebooting.

Click *Yes* to reboot OS and enable the new setting.

Click *No* to go back to the original window display.

Microsoft®, Windows® XP, Windows Vista®, Windows® 7, Windows® 8, and Microsoft® .NET Framework are trademarks and registered trademarks of Microsoft Corporation USA in the United States and other countries. Other company and/or product names listed herein are also trademarks and/or registered trademarks.

---

1<sup>st</sup> Edition August 2016

USCO America Inc.

136 W. Valletts Street, Elmhurst, IL 60126 USA

Phone: 630-832-0438/510-931-9046

E-mail: [sales@uscoamerica.com](mailto:sales@uscoamerica.com)

Business hours: 9:00a.m.-5:45p.m. (Central Time)

<http://uscoamerica.com/>

This document is protected by copyright law. Photocopying, duplicating, reproducing, and modifying of this product or document in part or by whole is prohibited.