



EM Series Gesture Model
Windows® Embedded Compact 7
Panel Computer

EMG7

7+ Wide: EMG7-W207A8-0024-x11-01

Setup Tool Manual

Seedsware Corporation
<http://www.seedsware.co.jp/global>

Table of Contents

| | |
|--|----|
| 1. Summary | 3 |
| 2. Starting/Ending of Setup Tool | 3 |
| 2-1 Starting the Setup Tool..... | 3 |
| 2-2 Ending the Setup Tool..... | 3 |
| 3. How to Make the Setting | 4 |
| 3-1 Backlight Setting..... | 4 |
| 3-1-1 Backlight Automatic Shutoff Setting..... | 4 |
| 3-1-2 Backlight Brightness Setting..... | 4 |
| 3-2 Touch Screen Setting..... | 5 |
| 3-2-1 Sensor Sensitivity Calibration..... | 5 |
| 3-2-2 Coordination Calibration..... | 6 |
| 3-2-3 Touch Sound Setting | 8 |
| 3-2-4 Cursor Setting..... | 8 |
| 3-3 Date/Time Setting..... | 9 |
| 3-3-1 Date setting | 9 |
| 3-3-2 Time Setting..... | 10 |
| 3-4 Display Setting | 10 |
| 3-4-1 Angle of Display | 10 |
| 3-5 Network Setting..... | 11 |
| 3-5-1 DHCP Setting | 11 |
| 3-5-2 IP Address Setting | 12 |
| 3-6 Registry Store..... | 13 |
| 3-6-1 Registry Store | 13 |
| 3-7 Startup Screen Setting..... | 14 |
| 3-7-1 Selecting Bitmap for Startup Screen..... | 14 |

1. Summary

This manual explains how to use the EMG7 setup tool.

Backlight, Touch screen, Date/Time, and Network settings can be changed with the EMG7 Setup tool.

2. Starting/Ending of Setup Tool

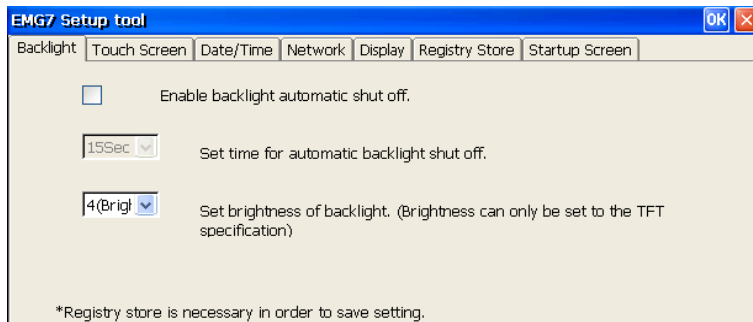
2-1 Starting the Setup Tool

From the start menu, click *Start > Program > EMG7 Setup Tool*.

The same window can also be opened from *EMG7 Setup Tool* icon on the desktop.

Window below will appear when opened.

Each setting can be made by clicking the corresponding tab.



2-2 Ending the Setup Tool

EMG7 Setup tool can be terminated by clicking *OK* or the *X* button on the title bar.

3. How to Make the Setting

3-1 Backlight Setting

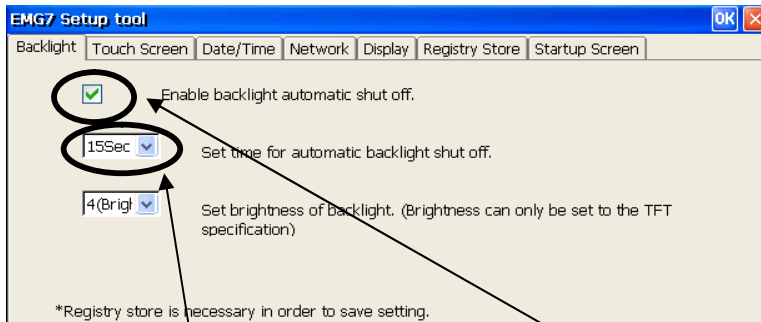
Click *Backlight* tab and backlight setting screen will appear.

Backlight and brightness of the backlight can be set.

3-1-1 Backlight Automatic Shutoff Setting

Backlight can be set to shut off automatically after a certain time has elapsed from the last touch screen input.

After backlight automatically shuts off, it will turn back on at touch screen input.



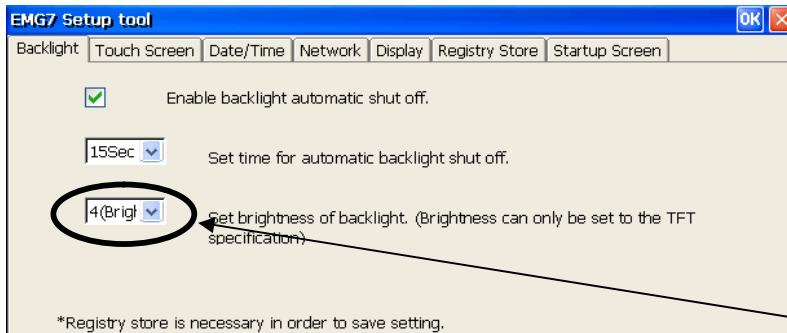
Choose the time for automatic shut off.

Place a check to activate backlight automatic shut off.

Note) Registry must be stored to save setting. Touch input will not be active for 0.5 seconds after the first touch input after backlight goes off.

3-1-2 Backlight Brightness Setting

Backlight brightness can be adjusted in four levels.



Choose brightness.

Note) Registry must be stored in order to save setting.

3-2 Touch Screen Setting

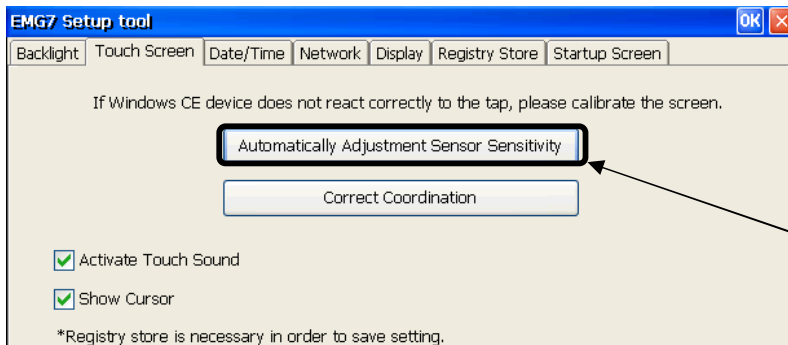
Click *Touch Screen* tab and touch screen setting screen will appear.

Touch screen calibration, show/hide of the cursor, and sound setting can be set.

EMG7 calibration includes *Sensor Sensitivity Calibration* that optimizes touch screen operation by resetting the influence of surrounding noise and metal of the installation environment, and *Coordination Calibration* that match the touched location with the coordination.

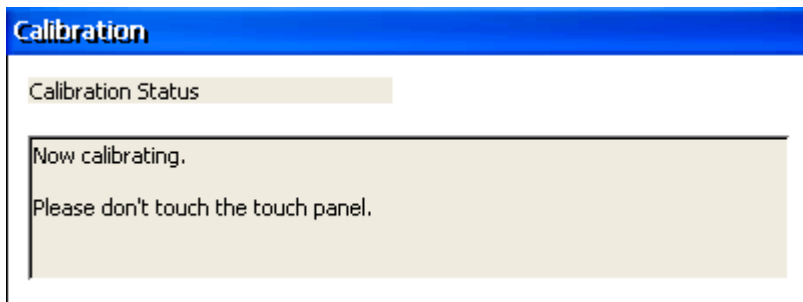
3-2-1 Sensor Sensitivity Calibration

Click *Automatically Adjustment Sensor Sensitivity* to calibrate sensor sensitivity.

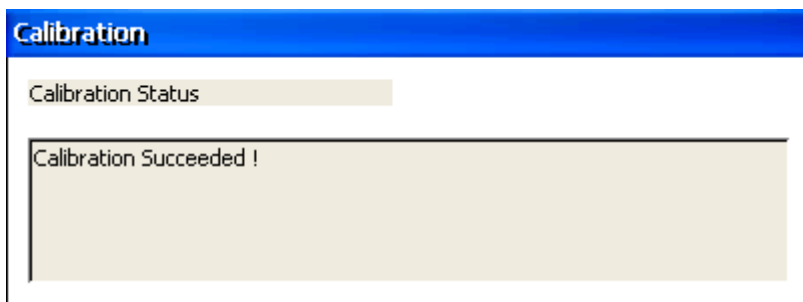


Click to execute calibration.

Below window will appear when executed.



Do not touch the touch screen or the product until calibration ends completely. Calibration will end automatically.



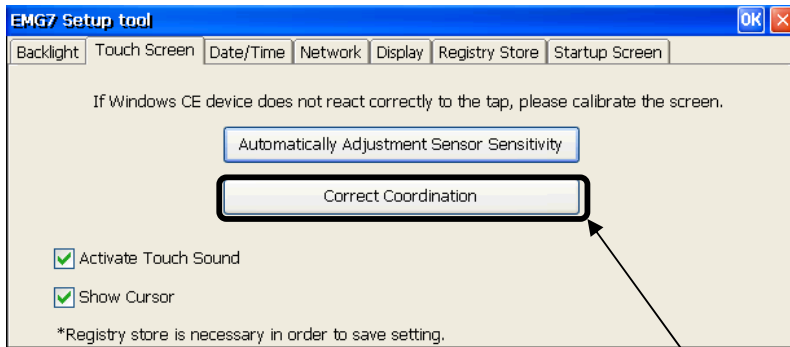
After calibrating, reboot and make sure the touch screen operates correctly. If it does not operate correctly, try calibrating again.

Note) Registry does not have to be stored to save calibration data of sensor sensitivity.

3-2-2 Coordination Calibration

Click *Correct Coordination* to calibrate the coordination.

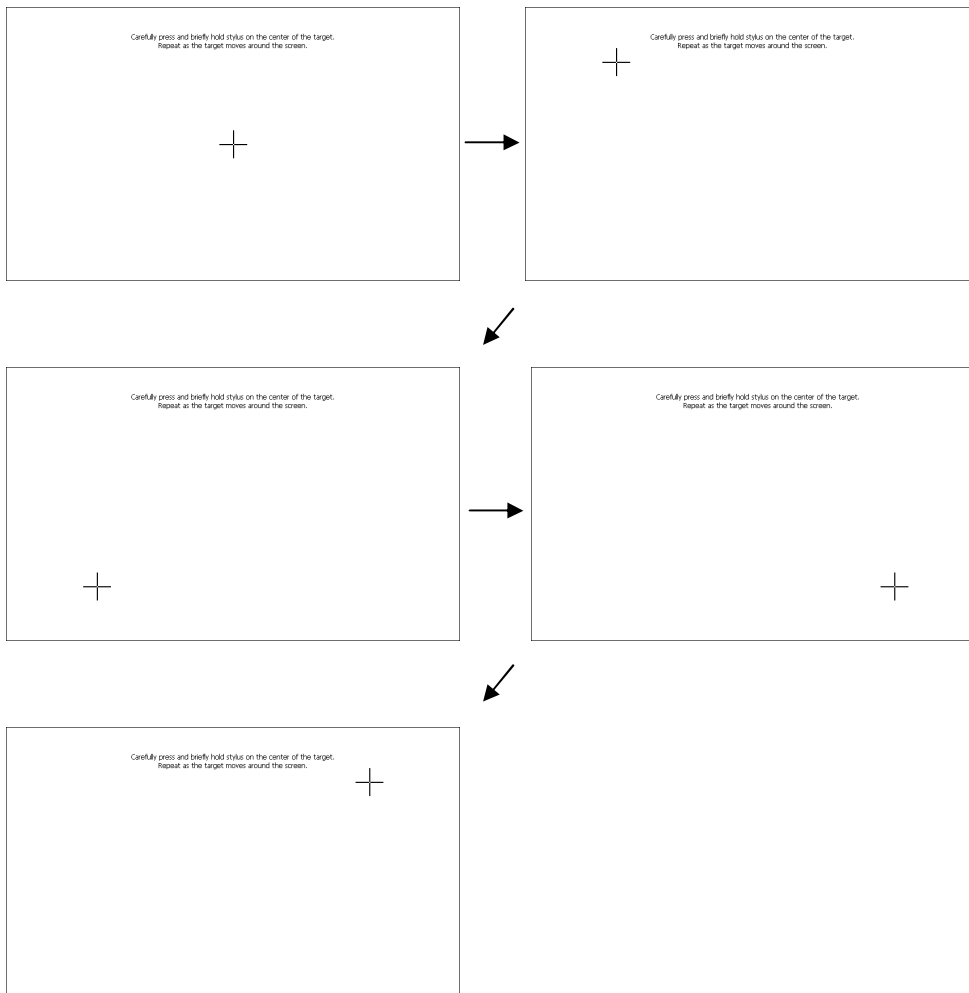
Conduct calibration manually by finger.



Click to execute coordinate calibration.

A cross mark <+> will appear on the screen.

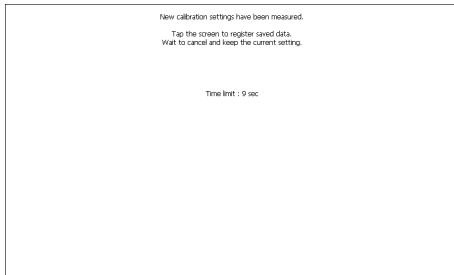
Touch the center of the cross in the order it appears. (Five locations in total.)



After all five locations, %center+, %upper left+, %lower left+, %lower right+, and %upper right+, have been touched, below screen will appear.

Touch the screen to end calibration.

To cancel, connect a keyboard and press *ESC*.



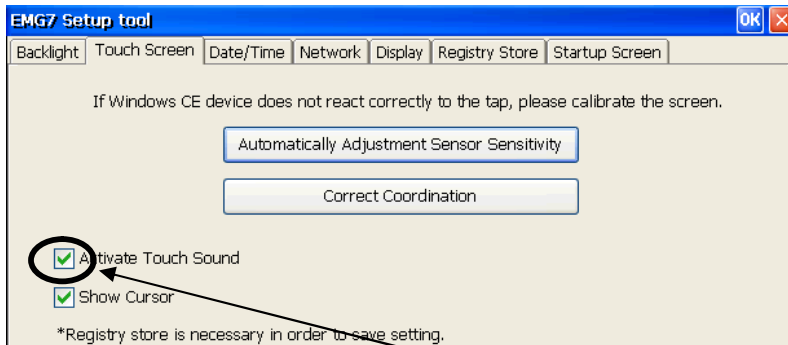
After calibrating, reboot and make sure the touch screen operates correctly.

If it does not operate correctly, try calibrating again.

Note) Registry must be stored to save the setting.

3-2-3 Touch Sound Setting

Touch sound can be activated or deactivated.

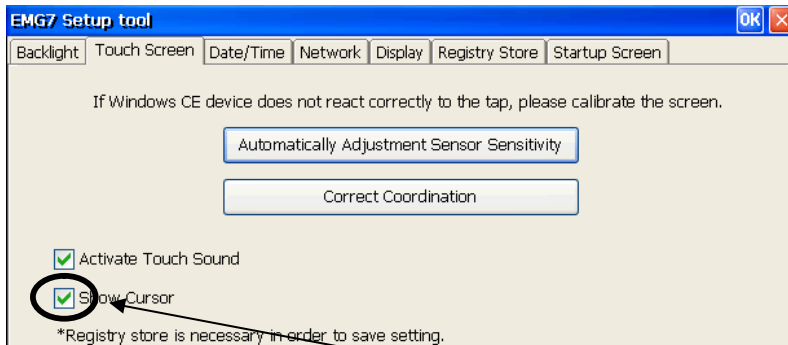


Place a check to activate the touch sound.

Note) Store registry and reboot the computer to enable the new setting.

3-2-4 Cursor Setting

Cursor can be shown or hidden.



Place a check to show the cursor.

Note) Store registry and reboot the computer to enable the new setting.

3-3 Date/Time Setting

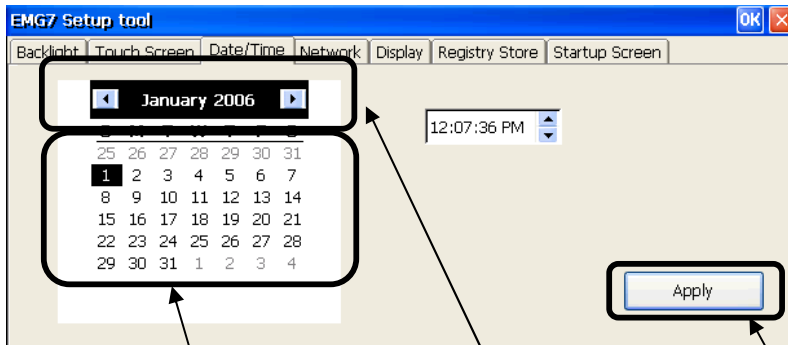
Click *Date/Time* tab and time setting screen will appear.

Date and time setting can be changed and set.

3-3-1 Date setting

Year, month, and day can be set.

Click *Apply* to reflect the setting.



Select date.

Set year and month with spin button.

Click to apply setting.



Year can be changed by clicking over the year and changing the value by spin button, or by directly inputting with keyboard.



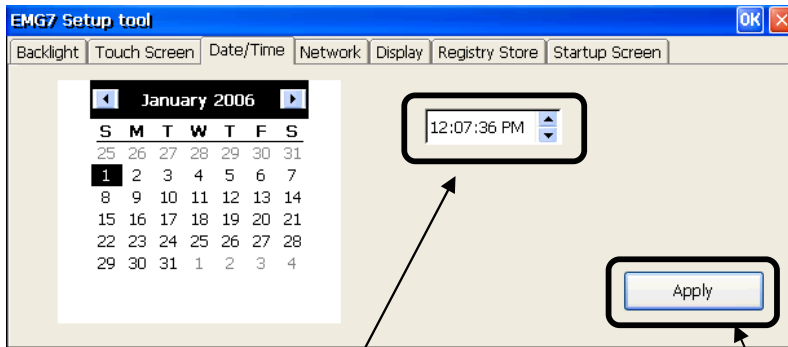
Month can also be changed by clicking over the month and choosing from the drop down list.

Note) Registry does not have to be stored to save date data.

3-3-2 Time Setting

Hour, minute and second can be changed and set.

Click *Apply* to reflect the setting.



Choose the value (hour, minute, or second) by spin button or inputting directly with a keyboard.

Click to apply setting.

Note) Registry does not have to be stored for saving time data.

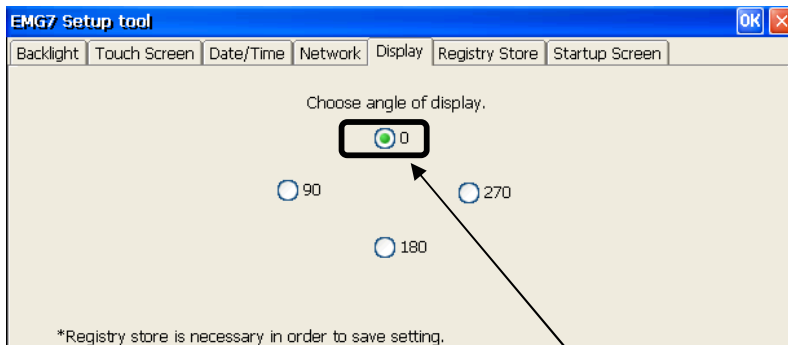
3-4 Display Setting

Click *Display* tab and display rotation angle setting screen will appear.

Angle of display can be changed and set.

3-4-1 Angle of Display

Click each angle to reflect the setting.



Choose by radio button.

Note) Registry must be stored to save setting.

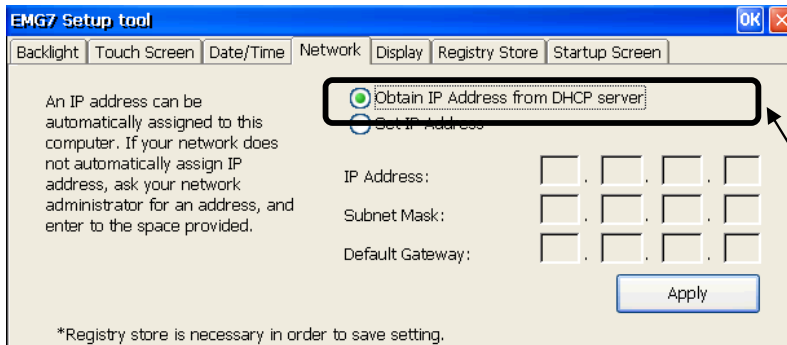
3-5 Network Setting

Click *Network* tab and network setting screen will appear.
Network setting for IP can be set.

3-5-1 DHCP Setting

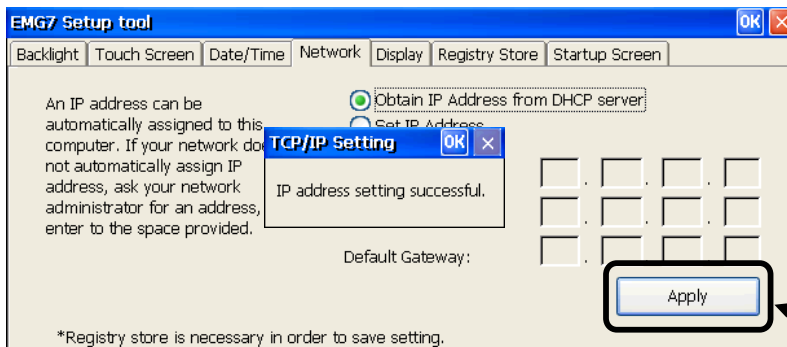
Click *Obtain IP Address from DHCP server*.

IP address can be obtained from the DHCP server.



Choose by radio button.

Click *Apply* to reflect the setting obtained from DHCP server.



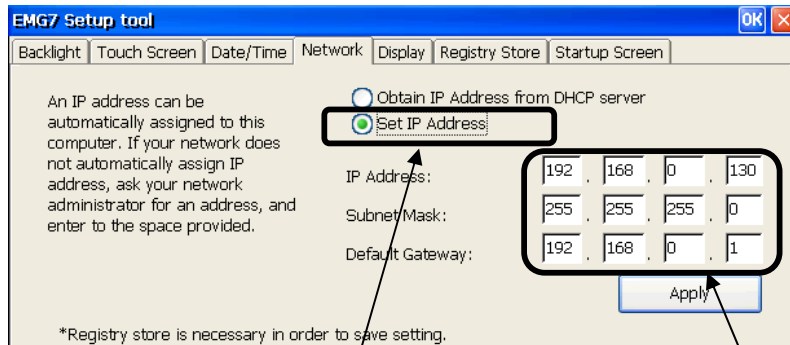
Click to reflect setting.

Note) Registry must be stored to save setting.

3-5-2 IP Address Setting

Choose and click *Set IP Address*.

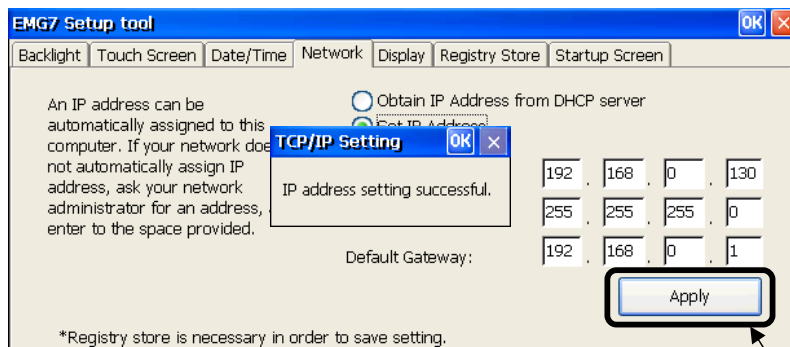
IP can be set manually.



Choose by radio button.

Input by keyboard after clicking.

Click *Apply* to enable the IP address.



Click to apply setting.

Note) Registry must be stored to save setting.

3-6 Registry Store

Click *Registry Store* tab and registry store screen will appear.

Registry can be stored in this process.

Registry will be stored by setting tool with HIVE base registry.

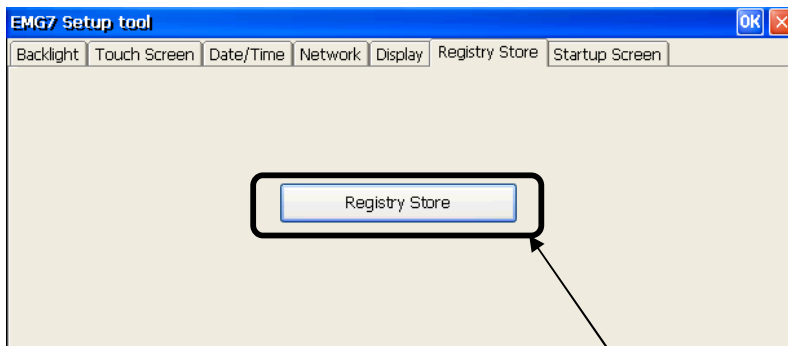
Registry must be stored in order to enable the change made in registry at boot up.

3-6-1 Registry Store

Click *Registry store* button to store registry.

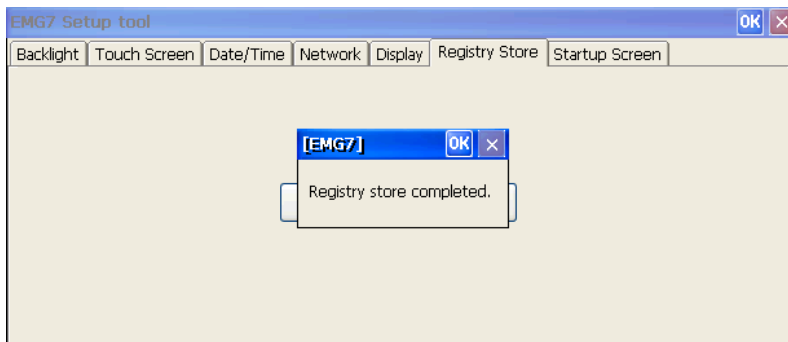
Memory partitioning setting (<control panel> - <system> - <memory> setting value) will also be stored at registry store.

The stored value will be valid at the next boot up.



Click to process registry store.

Below box will appear after successfully storing registry.

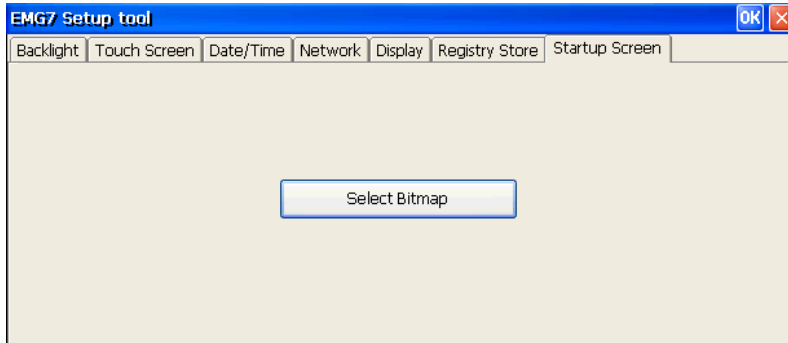


3-7 Startup Screen Setting

Click *Startup Screen*. Startup screen setting screen will appear.
Screen displayed before Windows boot up can be set.

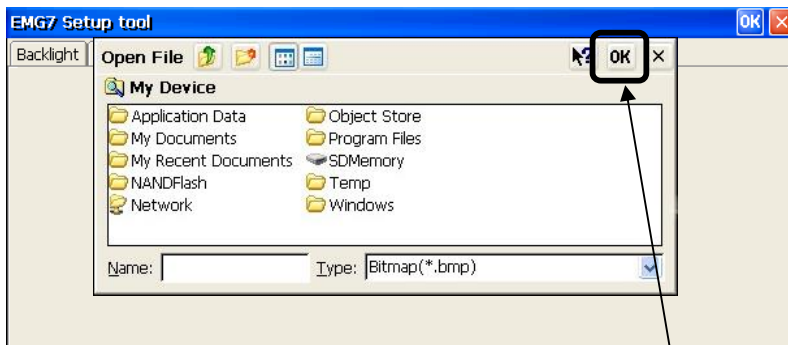
3-7-1 Selecting Bitmap for Startup Screen

Click *Select Bitmap* to select the bitmap to be used for startup screen.



Window for choosing the bitmap will appear.

Select the bitmap to be used at startup screen and click the *OK* button at the upper right corner of the window.



Click after choosing the bitmap.

After the window for bitmap selecting disappears, setting is complete.
Reboot and make sure the setting is valid at startup screen.

*Image file that can be used.

Format: 24bit bitmap file

Image Size: 800 x 480 (W x H)

Microsoft®, Windows® Embedded Compact 7 are trademarks and registered trademarks of Microsoft Corporation USA in the United States and other countries. Other company and/or product names listed herein are also trademarks and/or registered trademarks.

1st Edition August 2016

USCO America Inc.

136 W. Valletts Street, Elmhurst, IL 60126 USA

Phone: 630-832-0438/510-931-9046

E-mail: sales@uscoamerica.com

Business hours: 9:00a.m.-5:45p.m. (Central Time)

<http://uscoamerica.com/>

This document is protected by copyright law. Photocopying, duplicating, reproducing, and modifying of this product or document in part or by whole is prohibited.